



**2 HOUR**  
Fire Rating



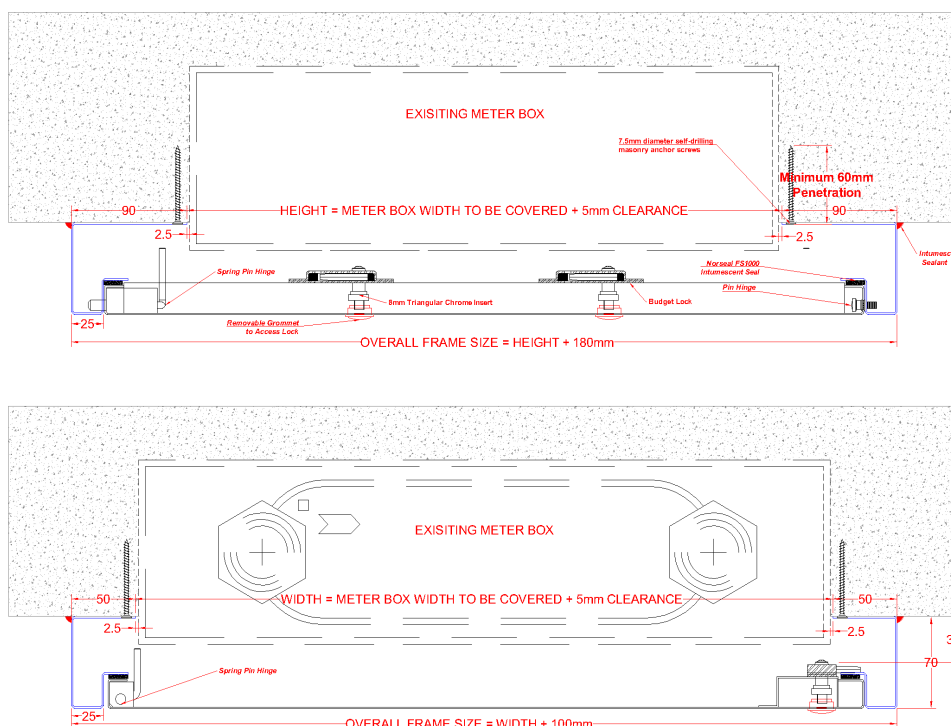
**NONE**  
Airtight Rating



**PICTURE**  
Frame



**NONE**  
Acoustic Rating



## Description

This Meter Box is designed to be surface mounted onto a structural membrane of a block wall system. It is manufactured with a 25mm wide picture frame. The Meter Box has a Metal faced door. The Meter Box door leaf is locked in place via a Budget Lock & a 8mm Triangular Meter Cabinet Insert as standard, other lock options are available upon request. The Meter Box is Powder Coated RAL 9010 30% Gloss. Other colours available upon request.

## Tests

2 Hour Fire Rated for integrity up to 1070x650mm in a wall application tested in accordance with BSEN 1634-1: 2014 from the meter side (Rear).

Not Acoustic tested.

Not Air Pressure tested.

Not Smoke tested.

## Seals

Draught Seals **YES** Smoke Seals **NO** Air Seals **NO** Acoustic Seals **NO** Intumescent Seals **YES**

## Manufacture

The Meter Box is manufactured from Zintec Steel with a 0.9mm thick Door and a 1.2mm thick Frame.

## Permitted Intumescent Sealants

Mann McGowan Pyromas A.

## Fixing Type Details

7.5mm diameter self-drilling masonry anchor screws, minimum 50mm screw penetration into the wall.

## Fitting

- 1) To remove the door from the frame, open the door & release the spring pin hinge. Pull door towards you and lift away from the frame.
- 2) Place the frame on top of the aperture ensuring the aperture is 5mm smaller than the panel size / back of frame opening size.
- 3) Fix the frame over the aperture using all fixing holes, ensuring it is square and flush with the wall.
- 4) Refit the door by locating the spring pin hinge ensuring this is fully located then close the door. Lock the door in place with key provided & ensure the door is flush when closed.
- 5) Lock the door with the key, ensuring it is flush with the frame.
- 6) Apply a minimum 5mm wide bead of sealant to seal the back of the frame to the wall ensuring all gaps between the meter box and wall are fully sealed.